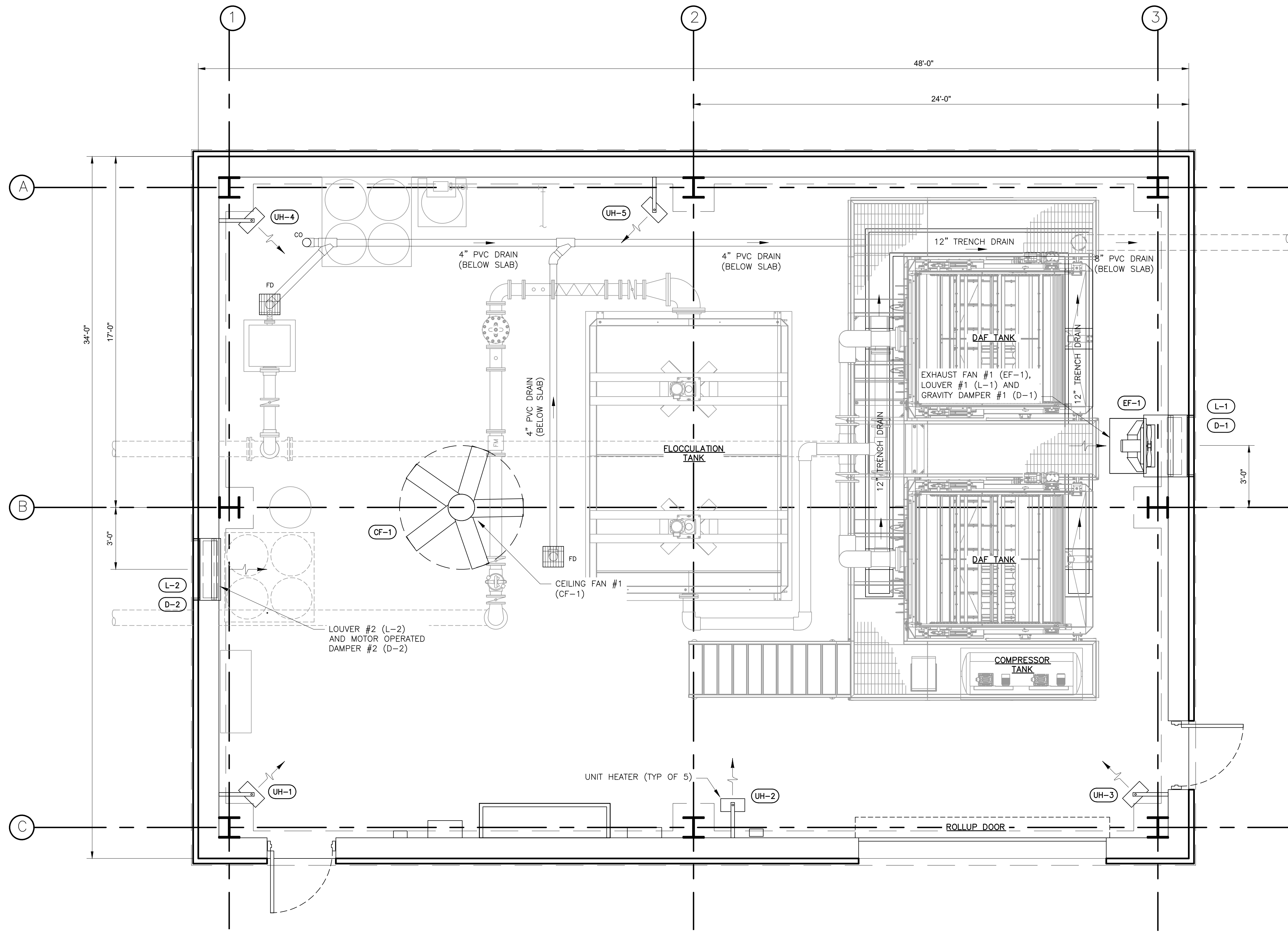
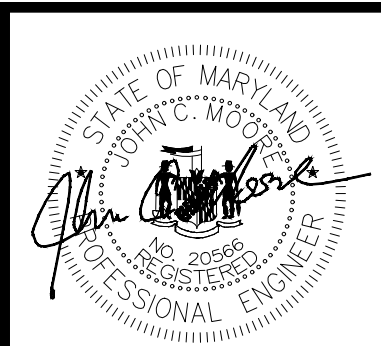
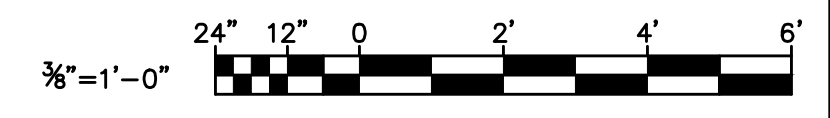


R:\2024\Projects\2024\2019_Emmitsburg\02019_Emmitsburg\02019_Emmitsburg\02019_Emmitsburg.dwg, Jan 22, 2024, 11:27am, Plot Scale: 1:1



MECHANICAL PLAN
SCALE: 3/8" = 1'-0"



PROFESSIONAL CERTIFICATION
I HEREBY CERTIFY THAT THESE DOCUMENTS WERE PREPARED OR APPROVED BY ME AND THAT I AM A DULY LICENSED PROFESSIONAL ENGINEER UNDER THE LAWS OF THE STATE OF MARYLAND.
LICENSE NO. 20886
EXPIRATION DATE 09/06/2024
RK&K
700 EAST PRATT STREET, SUITE 500
BALTIMORE, MARYLAND 21202
800.787.3755

NO.	DESCRIPTION	BY	DATE
1	ISSUED FOR BID - ADDENDUM NO. 3		02/06/2024

TOWN OF EMMITSBURG, MARYLAND
WATER PLANT CLARIFIER
CIP NO.: 4-1600-40-160-1
HAMPTON VALLEY ROAD, EMMITSBURG ELECTION DISTRICT No. 5, FREDERICK COUNTY, MARYLAND
MECHANICAL AND HVAC SYSTEMS

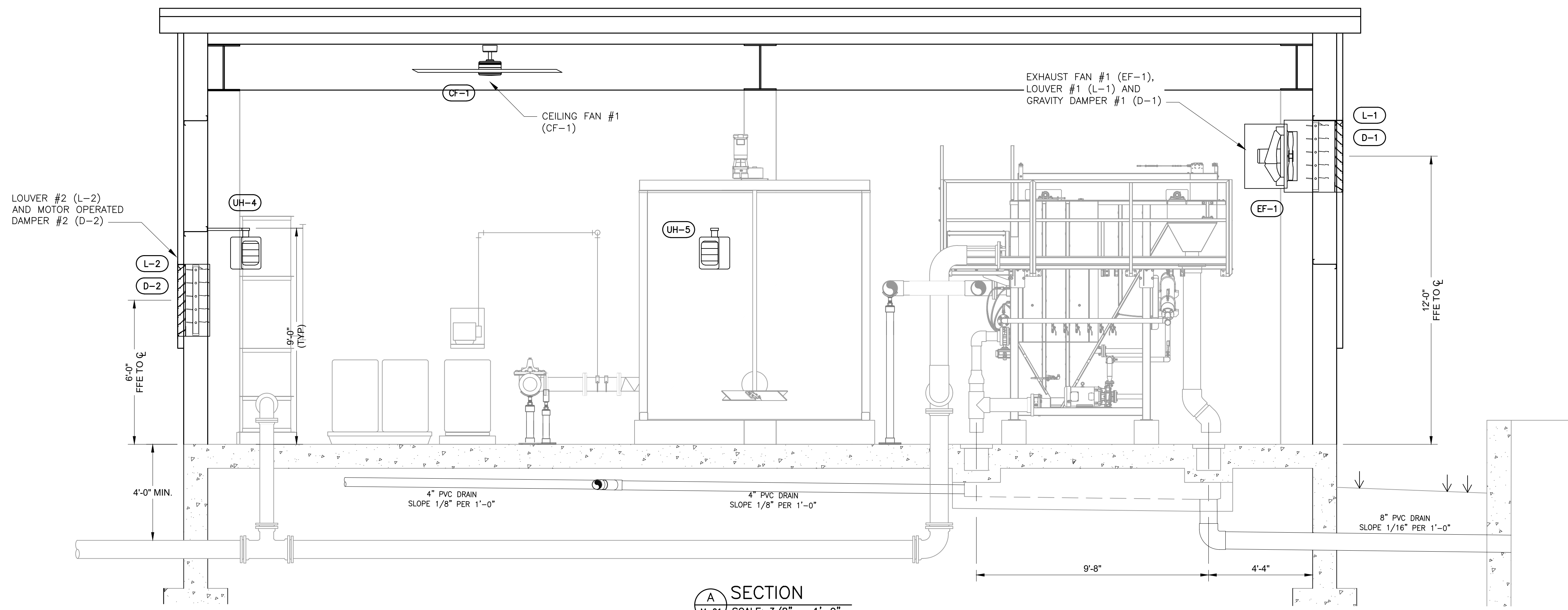
ENGINEER	CHECKED BY
WJG	JCM
DRAWN BY	DATE
WJG	1/2024
RK&K PROJECT NUMBER	
20119	

DRAWING NUMBER
M-01
SHEET NO. 34 OF 42



PROFESSIONAL CERTIFICATION
 I HEREBY CERTIFY THAT THESE DOCUMENTS WERE PREPARED OR APPROVED BY ME, AND THAT I AM A DULY LICENSED PROFESSIONAL ENGINEER UNDER THE LAWS OF THE STATE OF MARYLAND.
 LICENSE NO. 20896 EXPIRATION DATE 09/06/2024
RK&K 700 EAST PRATT STREET, SUITE 500
 BALTIMORE, MARYLAND 21202
 800.787.3755

NO.	DESCRIPTION	BY	DATE
1	REISSUED FOR BID - ADDENDUM NO. 3		02/06/2024



A SECTION
 M-01 SCALE: 3/8" = 1'-0"

FAN SCHEDULE											
MARK	LOCATION	FAN TYPE	DRIVE TYPE	CFM	STATIC PRES.	HP	RPM	VOLTAGE/PHASE/Hz	MANUFACTURER	MODEL NO.	REMARKS
EF-1	NORTHEAST WALL	PROPELLER	DIRECT	2,819	0.375	1/3	1160	115/1/60	GREENHECK	AER-E24C-609-B3	1,2,3,4,5
CF-1	BUILDING CENTER	5-BLADE	DIRECT	12,660	-	1/10	165	115/1/60	GREENHECK	DC-5-6	1,4,6,7

NOTES:
 1. SEE ELECTRICAL DRAWINGS FOR CONNECTION REQUIREMENTS
 2. WALL MOUNT, PLENUM REQUIRED
 3. MOTOR GUARD
 4. DISCONNECT SWITCH
 5. HIGH VOLUME LOW SPEED (HVLS)
 6. 12" DROP LENGTH/DOWN LEG
 7.

LOUVER/DAMPER SCHEDULE											
MARK	LOCATION	WIDTH (IN)	HEIGHT (IN)	CFM	MAX PRESS LOSS	FREE AREA (SQFT)	MAT'L	STYLE	MANUFACTURER	MODEL NO.	REMARKS
L-1	NORTHEAST WALL, EXHAUST FAN #1	36	36	2,819	0.07	4.38	AL	FIXED	GREENHECK	ESJ-401	3,4,6
D-1		36	36	2,819	0.045	5.69	AL	CONTROL DAMPER	GREENHECK	EM-30	2,5
L-2	SOUTHWEST WALL, INTAKE/SUPPLY	36	36	2,819	0.07	4.38	AL	FIXED	GREENHECK	ESJ-401	3,4,6
D-2		36	36	2,819	0.055	5.69	AL	CONTROL DAMPER	GREENHECK	WD-20	1,2

NOTES:
 1. SEE ELECTRICAL DRAWINGS FOR CONNECTION REQUIREMENTS
 2. PARALLEL BLADES
 3. INSECT SCREEN
 4. INTERNAL DRAIN
 5. GRAVITY OPERATED WITH COUNTERBALANCE
 6. 16" WALL SLEEVE

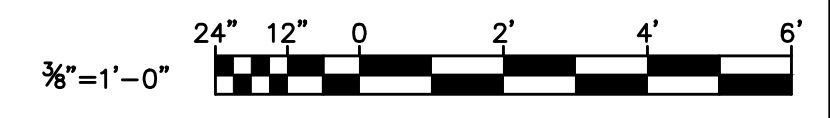
HEATER SCHEDULE									
MARK	LOCATION	kW	CFM	VOLTAGE	PHASE	HERTZ	AMPS	MANUFACTURER & MODEL NO.	REMARKS
UH-1	SOUTHEAST WALL, COLUMN	5	350	240	1	60	21.0	QMARK MUH05-21 OR APPROVED EQUAL	1,2
UH-2	SOUTHEAST WALL, CENTER COLUMN	5	350	240	1	60	21.0		
UH-3	NORTHEAST WALL, COLUMN	5	350	240	1	60	21.0		
UH-4	SOUTHWEST WALL, COLUMN	5	350	240	1	60	21.0		
UH-5	NORTHWEST WALL, CENTER COLUMN	5	350	240	1	60	21.0		

NOTES:
 1. SEE ELECTRICAL DRAWINGS FOR CONNECTION REQUIREMENTS
 2. TOP OF HEATER MOUNTED 9'-FT ABOVE FFE

TOWN OF EMMITSBURG, MARYLAND
 WATER PLANT CLARIFIER
 CIP NO. 4-1600-40-160-1
 HAMPTON VALLEY ROAD, EMMITSBURG ELECTION DISTRICT NO. 5, FREDERICK COUNTY, MARYLAND
 MECHANICAL AND HVAC SYSTEMS
 SECTION AND SCHEDULES

ENGINEER	CHECKED BY
WJG	JCM
DRAWN BY	DATE
WJG	1/2024
RK&K PROJECT NUMBER	
20119	

DRAWING NUMBER
M-02
 SHEET NO. 35 OF 42



R:\2024\Projects\2024\20119_Emmitsburg\0400\40-160-1.dwg Jan 22, 2024 - 12:23pm Prof. Scale 1:1