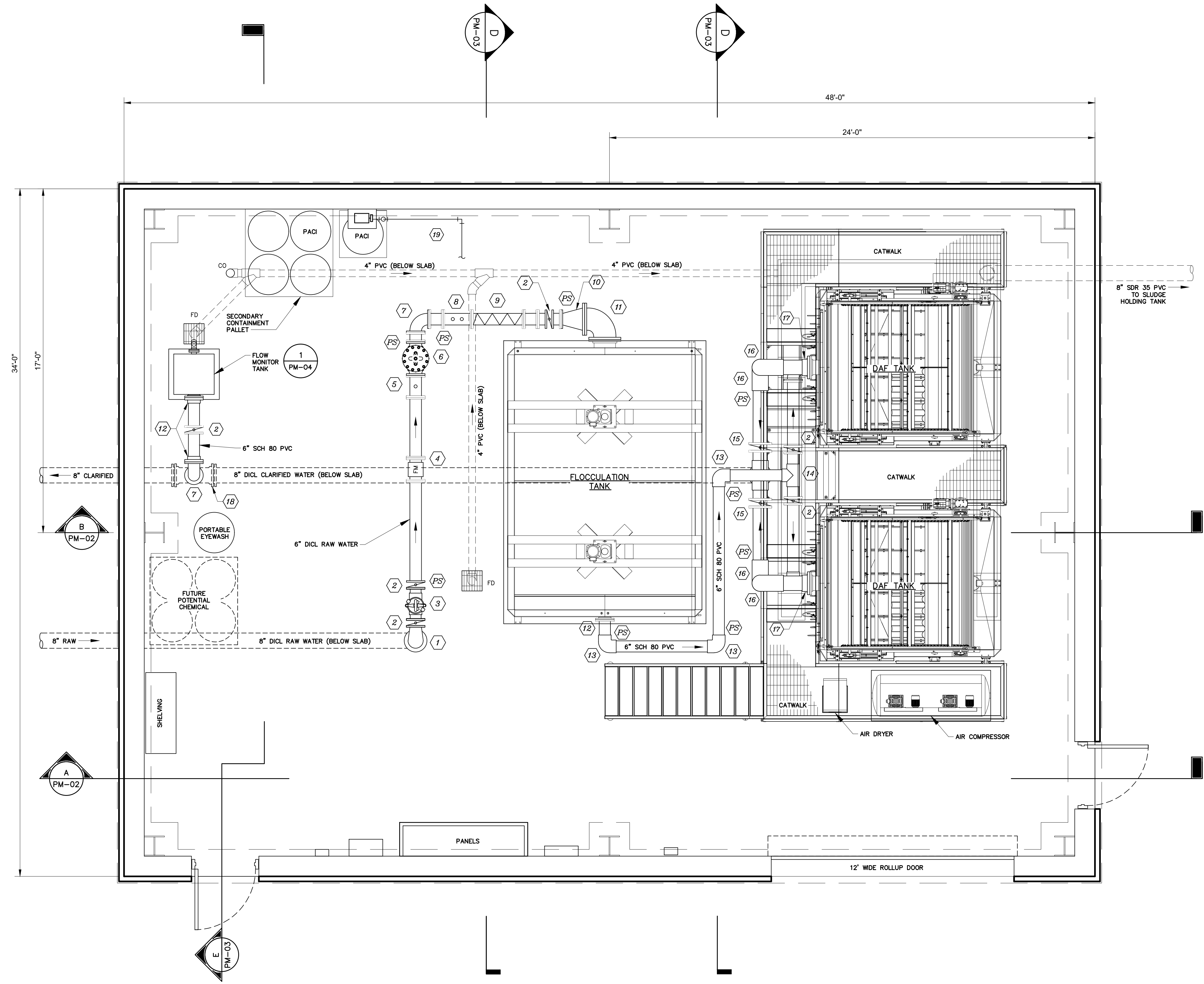
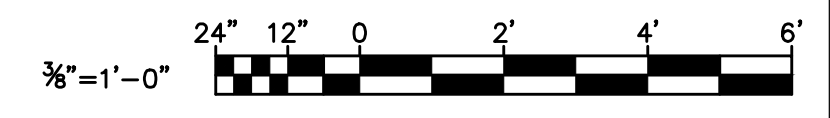


KEY NOTES:

1. 8"x6" FL DI REDUCING 90° ELBOW
  2. 6" BUTTERFLY VALVE
  3. 6" CI SIMPLEX BASKET STRAINER
  4. 6" MAGNETIC FLOWMETER
  5. 1" TAP WITH BRASS BALL VALVE FOR GRAB SAMPLES
  6. 6" FLOW CONTROL VALVE
  7. 6" FL DI 90° ELBOW
  8. CHEMICAL INJECTION QUILLS (2)
  9. 6" STATIC MIXER
  10. 6"x12" FL DI REDUCER
  11. 12" FL DI 90° ELBOW
  12. 6" SCH 80 PVC FLANGE
  13. 6" SCH 80 PVC 90° ELBOW
  14. 6"x6" SCH 80 PVC TEE
  15. 8" PVC WAFER TYPE BUTTERFLY VALVE
  16. 8" SCH 80 PVC 90° ELBOW
  17. 8" SCH 80 PVC FLANGE
  18. 8"x6" MJ DI TEE
  19. 1/2" SCH 80 PVC POLYALUMINUM CHLORIDE FEED
  20. 4" SCH 80 PVC 90° ELBOW
  21. 4"x6" SCH 80 PVC REDUCER
  22. 4" SCH 80 PVC FLANGE
  23. 8" MJ 90° ELBOW
  24. 8" SCH 80 PVC 45° ELBOW
  25. 8"x8" FL TEE
- PS. APPROXIMATE LOCATION OF PIPE SUPPORTS



PROCESS MECHANICAL FLOOR PLAN  
 SCALE: 3/8" = 1'-0"



PROFESSIONAL CERTIFICATION

I HEREBY CERTIFY THAT THESE DOCUMENTS WERE PREPARED OR APPROVED BY ME AND THAT I AM A DULY LICENSED PROFESSIONAL ENGINEER UNDER THE LAWS OF THE STATE OF MARYLAND. EXPIRATION DATE 02/06/2024  
 LICENSE NO. 20896



700 EAST PRATT STREET, SUITE 500  
 BALTIMORE, MARYLAND 21202  
 800.787.3755

NO.	DESCRIPTION	BY	DATE
1	REISSUED FOR BID - ADDENDUM NO. 3		02/06/2024

TOWN OF EMMITSBURG, MARYLAND  
 WATER PLANT CLARIFIER  
 CIP NO. 4-1600-40-160-1  
 HAMPTON VALLEY ROAD, EMMITSBURG ELECTION DISTRICT No. 5, FREDERICK COUNTY, MARYLAND

ENGINEER	CHECKED BY
DD	JCM
DRAWN BY	DATE
DD	1/2024
RK&K PROJECT NUMBER	
20119	

DRAWING NUMBER  
**PM-01**  
 SHEET NO. 30 OF 42

R:\21\1315 - \User\koc.com\koc\Draw\Projects\2020\2019\_Emmitsburg\CAD\DWG\AS\PM-01.dwg File: 06, 2024 - 10:08am Plot: Scale: 1:1



PROFESSIONAL CERTIFICATION  
 I HEREBY CERTIFY THAT THESE DOCUMENTS WERE PREPARED OR APPROVED BY ME AND THAT I AM A DULY LICENSED PROFESSIONAL ENGINEER UNDER THE LAWS OF THE STATE OF MARYLAND. LICENSE NO. 20896 EXPIRATION DATE 02/06/2024

NO.	DESCRIPTION	BY	DATE
1	REISSUED FOR BID - ADDENDUM NO. 3		02/06/2024

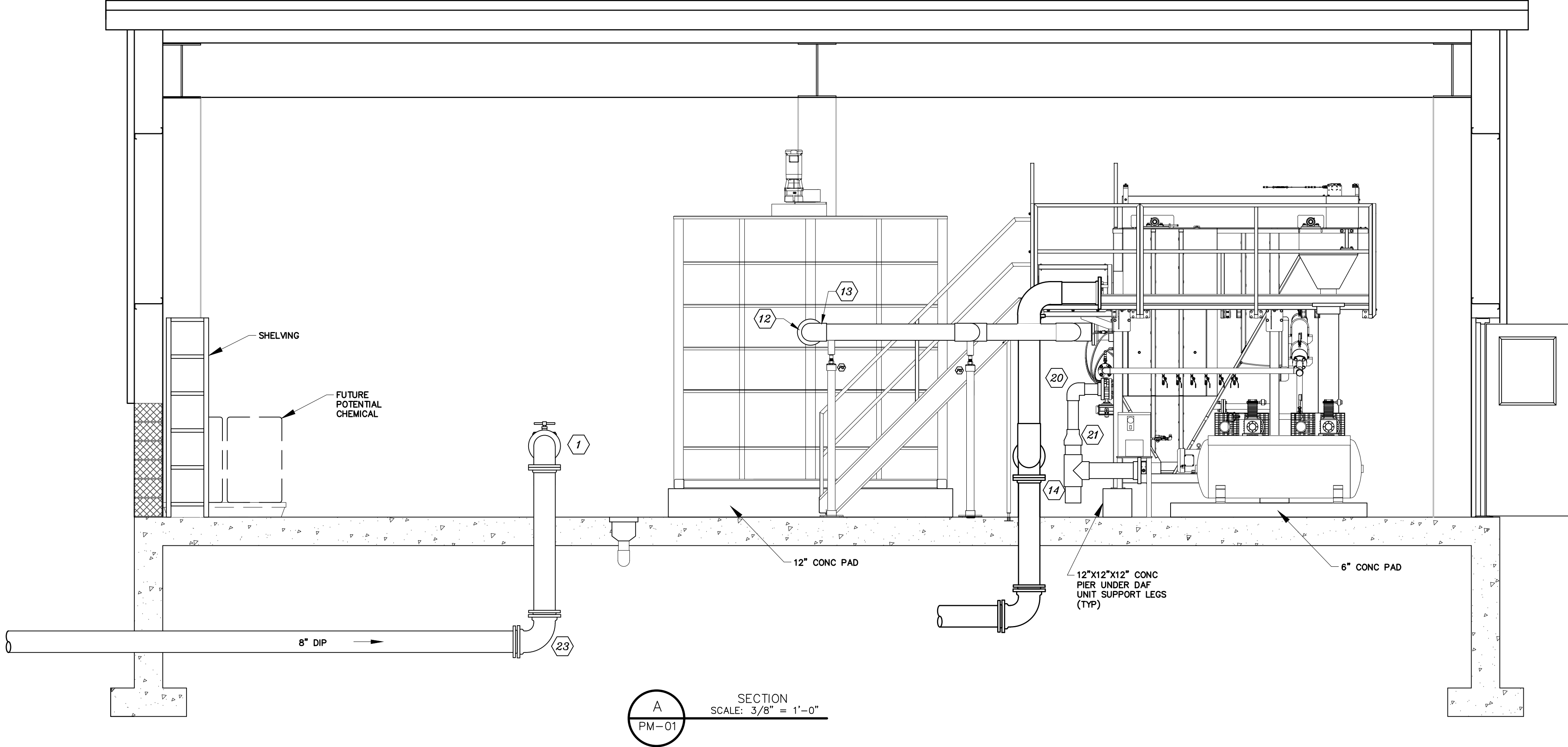
TOWN OF EMMITSBURG, MARYLAND  
 WATER PLANT CLARIFIER  
 CIP NO. 4-1600-40-160-1  
 HAMPTON VALLEY ROAD, EMMITSBURG ELECTION DISTRICT No. 5, FREDERICK COUNTY, MARYLAND

ENGINEER	CHECKED BY
DD	JCM
DRAWN BY	DATE
DD	1/2024
RK&K PROJECT NUMBER	
20119	

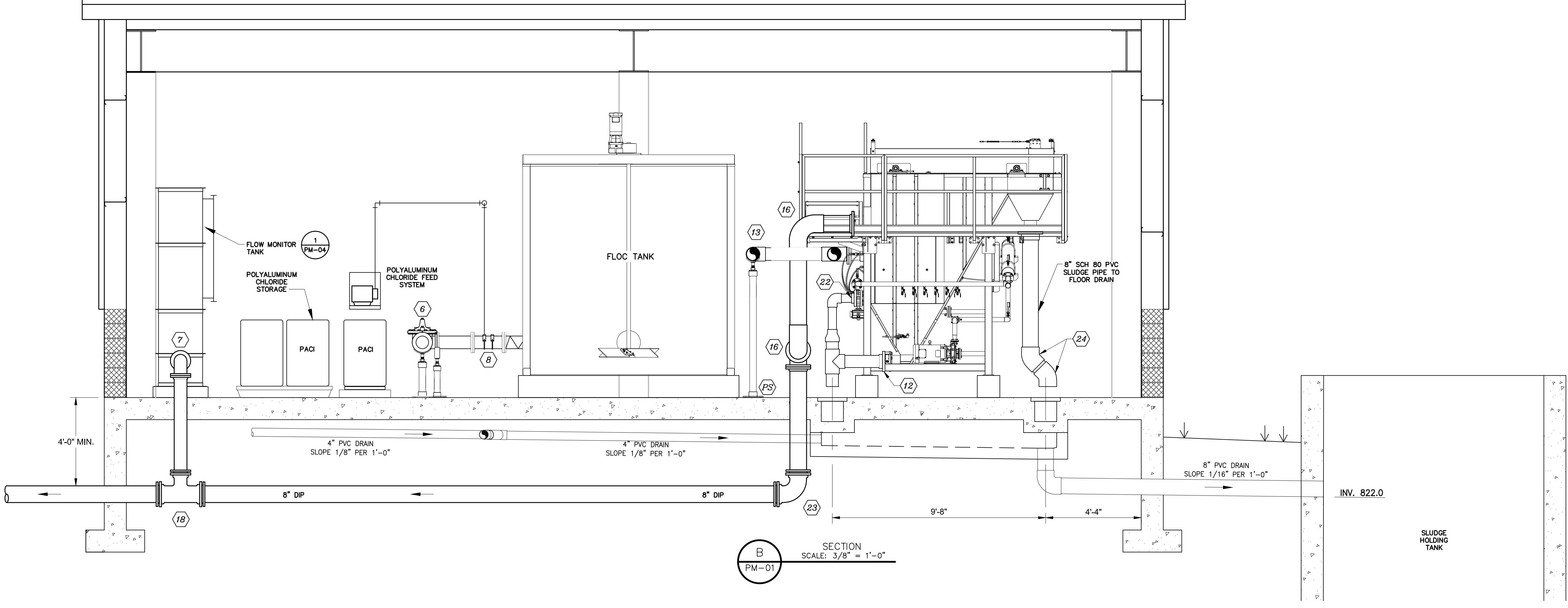
DRAWING NUMBER  
**PM-02**  
 SHEET NO. 31 OF 42

**KEY NOTES:**

1. 8"x6" FL DI REDUCING 90° ELBOW
  2. 6" BUTTERFLY VALVE
  3. 6" CI SIMPLEX BASKET STRAINER
  4. 6" MAGNETIC FLOWMETER
  5. 1" TAP WITH BRASS BALL VALVE FOR GRAB SAMPLES
  6. 6" FLOW CONTROL VALVE
  7. 6" FL DI 90° ELBOW
  8. CHEMICAL INJECTION QUILLS (2)
  9. 6" STATIC MIXER
  10. 6"x12" FL DI REDUCER
  11. 12" FL DI 90° ELBOW
  12. 6" SCH 80 PVC FLANGE
  13. 6" SCH 80 PVC 90° ELBOW
  14. 6"x6" SCH 80 PVC TEE
  15. 8" PVC WAFER TYPE BUTTERFLY VALVE
  16. 8" SCH 80 PVC 90° ELBOW
  17. 8" SCH 80 PVC FLANGE
  18. 8"x6" MJ DI TEE
  19. 1/2" SCH 80 PVC POLYALUMINUM CHLORIDE FEED
  20. 4" SCH 80 PVC 90° ELBOW
  21. 4"x6" SCH 80 PVC REDUCER
  22. 4" SCH 80 PVC FLANGE
  23. 8" MJ 90° ELBOW
  24. 8" SCH 80 PVC 45° ELBOW
  25. 8"x8" FL TEE
- PS. APPROXIMATE LOCATION OF PIPE SUPPORTS

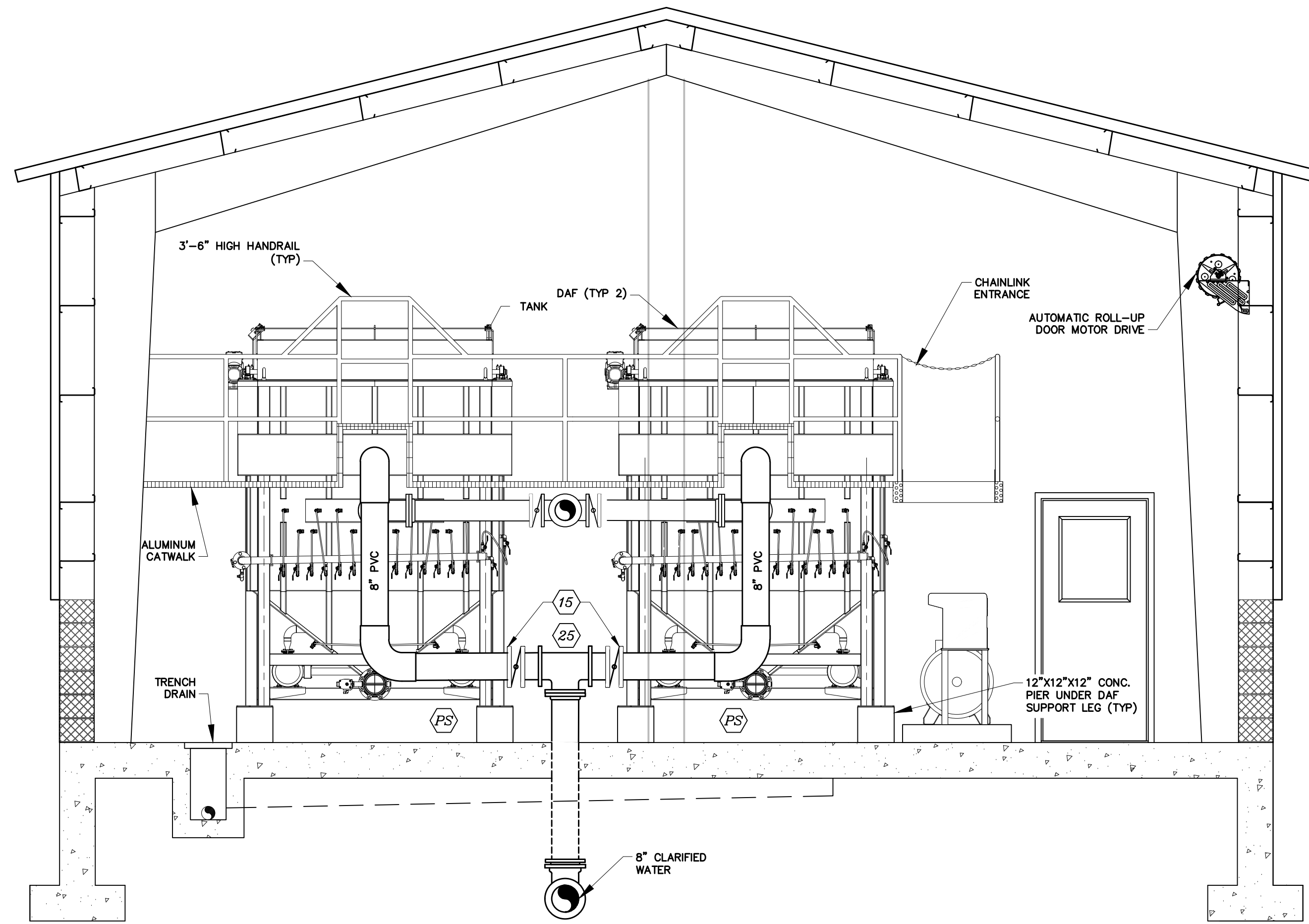


**A**  
 SECTION  
 SCALE: 3/8" = 1'-0"  
 PM-01

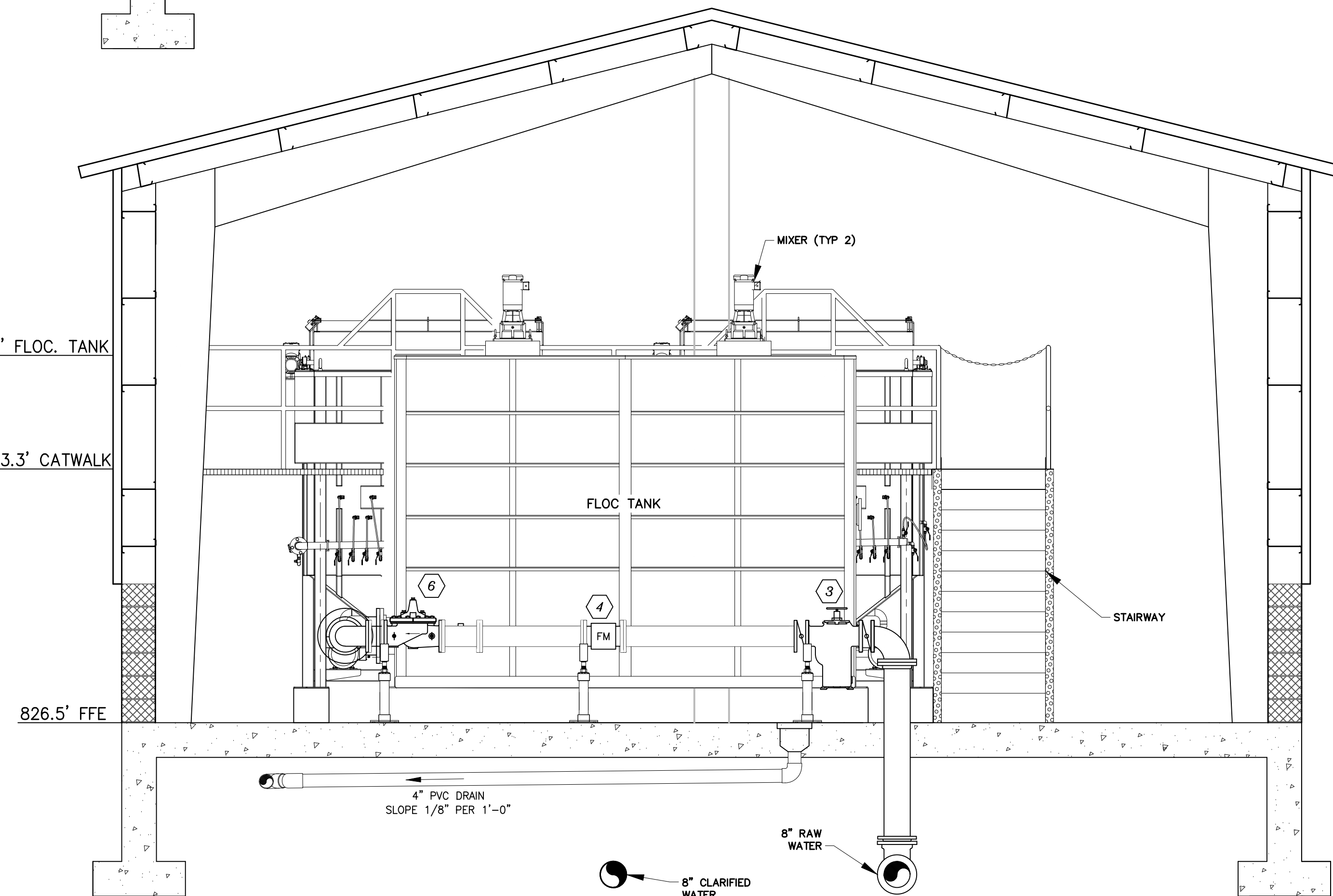


**B**  
 SECTION  
 SCALE: 3/8" = 1'-0"  
 PM-01

R:\21\1315 - \User\dk.com\Projects\2020\2019 - Emmitsburg\DWG\PM-02.dwg File: 06, 2024 - 10:13:00 Plot Scale: 1:1



C SECTION  
SCALE: 3/8" = 1'-0"



D SECTION  
SCALE: 3/8" = 1'-0"

KEY NOTES:

1. 8"x6" FL DI REDUCING 90° ELBOW
2. 6" BUTTERFLY VALVE
3. 6" CI SIMPLEX BASKET STRAINER
4. 6" MAGNETIC FLOWMETER
5. 1" TAP WITH BRASS BALL VALVE FOR GRAB SAMPLES
6. 6" FLOW CONTROL VALVE
7. 6" FL DI 90° ELBOW
8. CHEMICAL INJECTION QUILLS (2)
9. 6" STATIC MIXER
10. 6"x12" FL DI REDUCER
11. 12" FL DI 90° ELBOW
12. 6" SCH 80 PVC FLANGE
13. 6" SCH 80 PVC 90° ELBOW
14. 6"x6" SCH 80 PVC TEE
15. 8" PVC WAFER TYPE BUTTERFLY VALVE
16. 8" SCH 80 PVC 90° ELBOW
17. 8" SCH 80 PVC FLANGE
18. 8"x6" MJ DI TEE
19. 1/2" SCH 80 PVC POLYALUMINUM CHLORIDE FEED
20. 4" SCH 80 PVC 90° ELBOW
21. 4"x6" SCH 80 PVC REDUCER
22. 4" SCH 80 PVC FLANGE
23. 8" MJ 90° ELBOW
24. 8" SCH 80 PVC 45° ELBOW
25. 8"x8" FL TEE

PS. APPROXIMATE LOCATION OF PIPE SUPPORTS



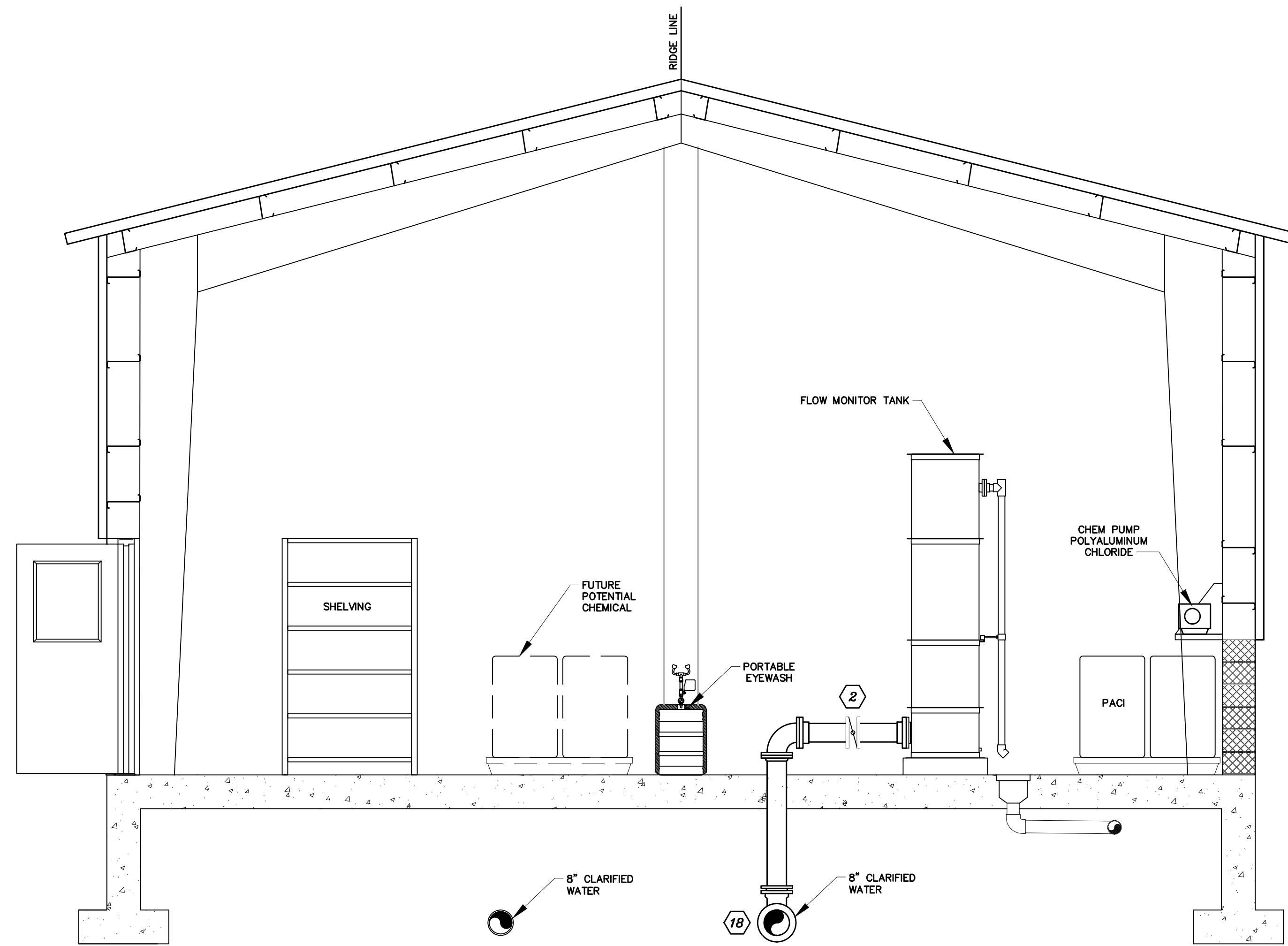
PROFESSIONAL CERTIFICATION  
I HEREBY CERTIFY THAT THESE DOCUMENTS WERE PREPARED OR APPROVED BY ME AND THAT I AM A DULY LICENSED PROFESSIONAL ENGINEER UNDER THE LAWS OF THE STATE OF MARYLAND.  
EXPIRATION DATE 09/06/2024  
LICENSE NO. 20986

NO.	DESCRIPTION	BY	DATE
1	REISSUED FOR BID - ADDENDUM NO. 3		02/06/2024

TOWN OF EMMITSBURG, MARYLAND  
WATER PLANT CLARIFIER  
CIP NO: 4-1600-40-160-1  
HAMPTON VALLEY ROAD, EMMITSBURG ELECTION DISTRICT No. 5, FREDERICK COUNTY, MARYLAND

ENGINEER	CHECKED BY
DD	JCM
DRAWN BY	DATE
DD	1/2024
RK&K PROJECT NUMBER	
20119	

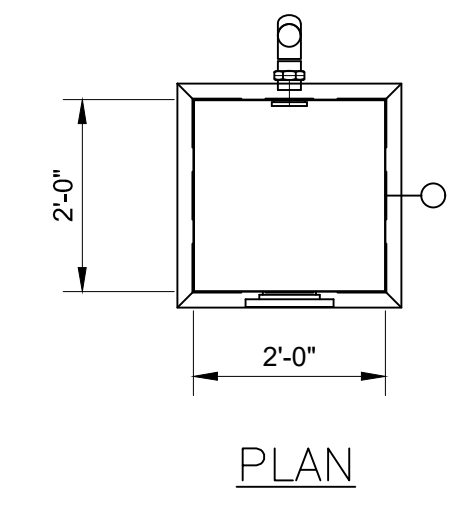
DRAWING NUMBER  
PM-03  
SHEET NO. 32 OF 42



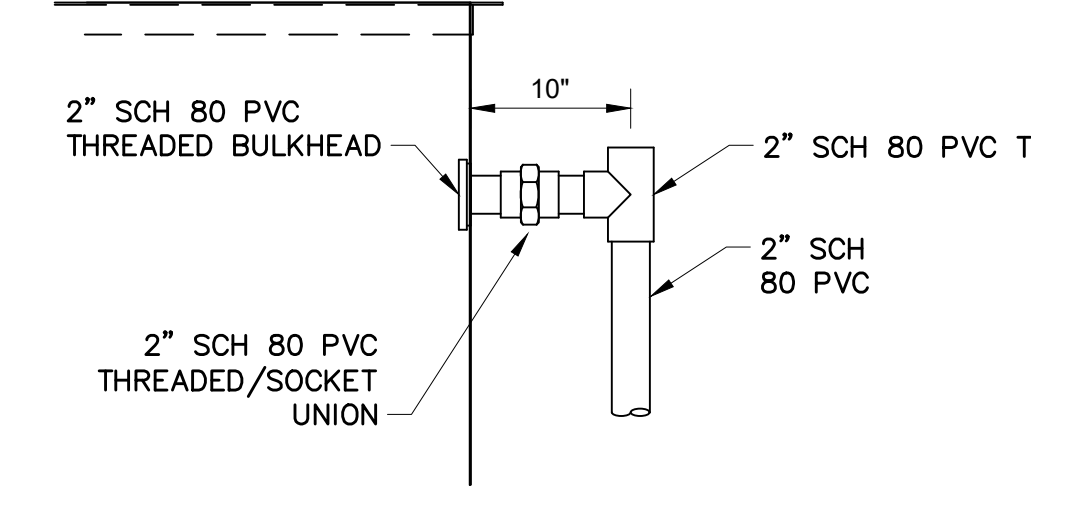
**E**  
SECTION  
PM-01  
SCALE: 3/8" = 1'-0"

**KEY NOTES:**

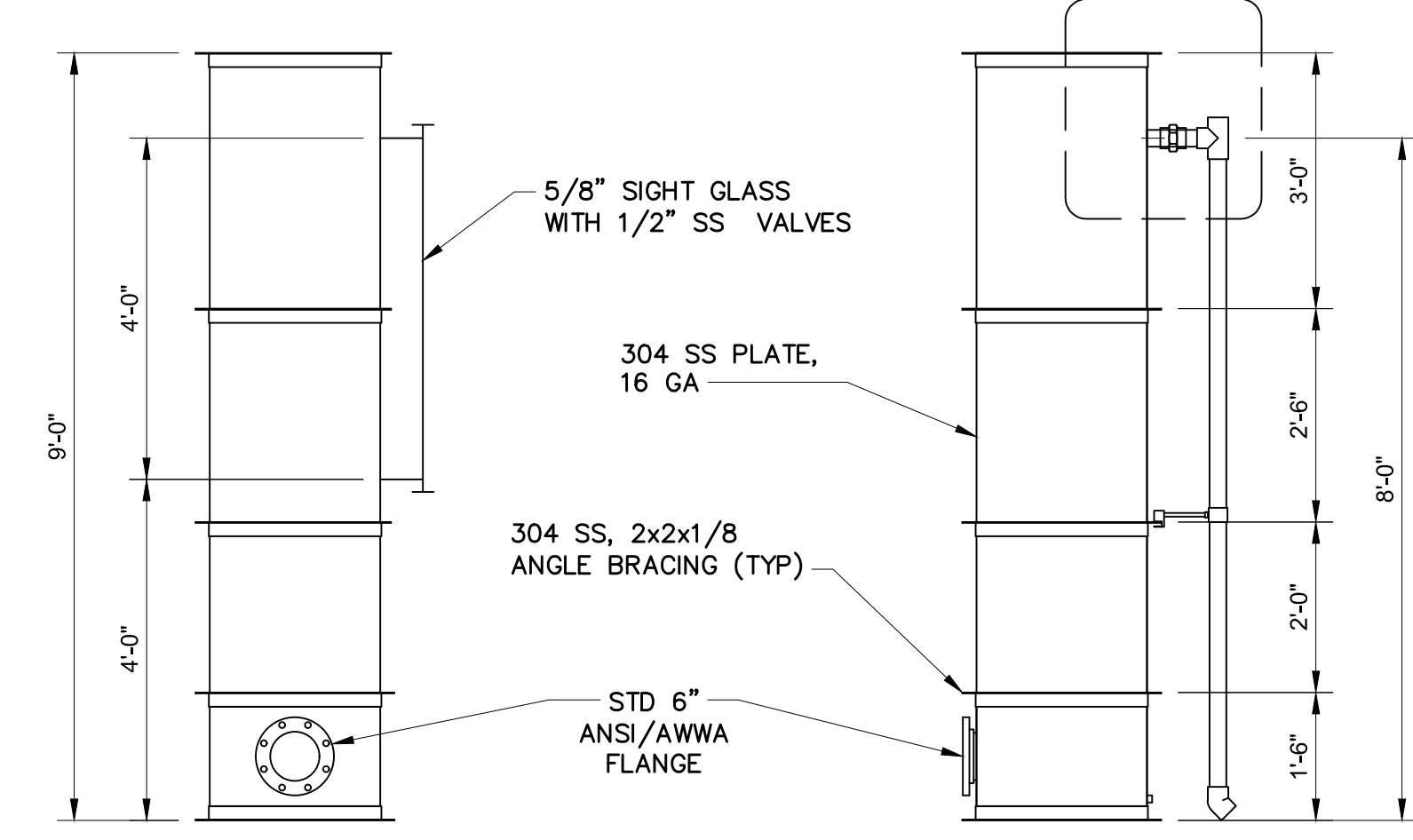
1. 8"x6" FL DI REDUCING 90° ELBOW
  2. 6" BUTTERFLY VALVE
  3. 6" CI SIMPLEX BASKET STRAINER
  4. 6" MAGNETIC FLOWMETER
  5. 1" TAP WITH BRASS BALL VALVE FOR GRAB SAMPLES
  6. 6" FLOW CONTROL VALVE
  7. 6" FL DI 90° ELBOW
  8. CHEMICAL INJECTION QUILLS (2)
  9. 6" STATIC MIXER
  10. 6"x12" FL DI REDUCER
  11. 12" FL DI 90° ELBOW
  12. 6" SCH 80 PVC FLANGE
  13. 6" SCH 80 PVC 90° ELBOW
  14. 6"x6" SCH 80 PVC TEE
  15. 8" PVC WAFER TYPE BUTTERFLY VALVE
  16. 8" SCH 80 PVC 90° ELBOW
  17. 8" SCH 80 PVC FLANGE
  18. 8"x6" MJ DI TEE
  19. 1/2" SCH 80 PVC POLYALUMINUM CHLORIDE FEED
  20. 4" SCH 80 PVC 90° ELBOW
  21. 4"x6" SCH 80 PVC REDUCER
  22. 4" SCH 80 PVC FLANGE
  23. 8" MJ 90° ELBOW
  24. 8" SCH 80 PVC 45° ELBOW
- PS. APPROXIMATE LOCATION OF PIPE SUPPORTS



PLAN



OVERFLOW  
SCALE: NTS



FRONT ELEVATION

SIDE ELEVATION

**1**  
FLOW MONITOR TANK DETAIL  
PM-01  
SCALE: 1/2" = 1'-0"



PROFESSIONAL CERTIFICATION  
I HEREBY CERTIFY THAT THESE DOCUMENTS WERE PREPARED OR APPROVED BY ME AND THAT I AM A DULY LICENSED PROFESSIONAL ENGINEER UNDER THE LAWS OF THE STATE OF MARYLAND.  
LICENSE NO. 20896 EXPIRATION DATE 02/06/2024

**RK&K**  
700 EAST PRATT STREET, SUITE 500  
BALTIMORE, MARYLAND 21202  
800.787.3755

NO.	DESCRIPTION	BY	DATE
1	REISSUED FOR BID - ADDENDUM NO. 3		02/06/2024

TOWN OF EMMITSBURG, MARYLAND  
WATER PLANT CLARIFIER  
CIP NO.: 4-1600-40-160-1  
HAMPTON VALLEY ROAD, EMMITSBURG ELECTION DISTRICT No. 5, FREDERICK COUNTY, MARYLAND

SECTIONS AND DETAILS

ENGINEER DD	CHECKED BY JCM
DRAWN BY DD	DATE 1/2024
RK&K PROJECT NUMBER 20119	

DRAWING NUMBER  
**PM-04**  
SHEET NO. 33 OF 42