

- GENERAL NOTES- NEW WORK**
- A. INFORMATION SHOWN ON THIS DRAWING PERTAINING TO EXISTING CONDITIONS HAS BEEN OBTAINED FROM AVAILABLE BUILDING DRAWINGS OR GENERAL FIELD OBSERVATIONS AND MAY NOT INDICATE EXISTING CONDITIONS IN DETAIL OR DIMENSION. DETERMINE EXISTING CONDITIONS PRIOR TO FABRICATION OR PERFORMANCE OF ANY WORK. SHOULD CONDITIONS BE DISCOVERED THAT PREVENT EXECUTION OF THE WORK AS INDICATED, IMMEDIATELY NOTIFY THE ARCHITECT IN WRITING AND AHEAD DIRECTION BEFORE PROCEEDING WITH THE WORK.
 - B. DO NOT LOCATE DUCTWORK OR PIPING ABOVE ELECTRICAL PANELS OR EQUIPMENT.
- GENERAL NOTES- DEMOLITION**
- A. INFORMATION SHOWN ON THIS DRAWING PERTAINING TO EXISTING CONDITIONS HAS BEEN OBTAINED FROM AVAILABLE BUILDING DRAWINGS OR GENERAL FIELD OBSERVATIONS AND MAY NOT INDICATE EXISTING CONDITIONS IN DETAIL OR DIMENSION. DETERMINE EXISTING CONDITIONS PRIOR TO FABRICATION OR PERFORMANCE OF ANY WORK. SHOULD CONDITIONS BE DISCOVERED THAT PREVENT EXECUTION OF THE WORK AS INDICATED, IMMEDIATELY NOTIFY THE ARCHITECT IN WRITING AND AHEAD DIRECTION BEFORE PROCEEDING WITH THE WORK.
 - B. DEMOLITION SHALL INCLUDE REMOVAL AND OFF-SITE DISPOSAL OF MATERIALS. DO NOT ABANDON IN PLACE ANY MECHANICAL AND RELATED ELECTRICAL COMPONENTS UNLESS OTHERWISE NOTED ON DRAWINGS.
 - C. UNLESS OTHERWISE NOTED, MECHANICAL/PLUMBING ITEMS SHOWN HEAVY DASHED (—) SHALL BE REMOVED AND MECHANICAL/PLUMBING ITEMS SHOWN LIGHT SOLID (—) SHALL REMAIN.

ZIS

ZIGER | SNEAD ARCHITECTS
 1006 Marton Street
 Baltimore, Maryland 21201
 410.576.9131
 zigersnead.com

STRUCTURAL ENGINEER
 Albrecht Engineering
 2500 Boston Street
 Suite 302, #6-12
 Baltimore, MD 21224
 410.654.9070

LANDSCAPE ARCHITECT
 Flora Tealier Landscap Architects
 800 N. Charles St
 Suite 300
 Baltimore, MD 21201
 410.654.9396

MECHANICAL ENGINEER
 James Prossy Associates
 11165 Red Run Blvd.
 Suite 200
 Baltimore, MD 21117
 410.654.9101

GEOTECHNICAL ENGINEER
 Schrabill Engineering
 9800 Joe Stuart Pkwy
 Suite 200
 Chovr, VA 23059
 804.696.5222

CIVIL ENGINEER
 AMT Engineering, Inc.
 800 King Farm Blvd
 4th Floor
 Rockville, MD 20850
 301.485.1255

COST ESTIMATOR
 Forlino Group, LLC
 5180 Parkstone Dr.
 Suite 700
 Chantilly, VA 20151
 703.485.1200



Professional Certification: I hereby certify that these documents were prepared or approved by me, and that I am a duly licensed professional engineer under the laws of the state of Maryland. License No. 20896, Expiration date: 12/31/2025.

JPA Project No. 7375-20

GRENBRIER STATE PARK CHARGE STATION
 STATE OF MARYLAND - DEPARTMENT OF GENERAL SERVICES
 21643 NATIONAL PIKE
 BOONSBORO, MD 21713

NO.	REVISION	TITLE	DATE

SDP AND CONSTRUCTION SET 23 AUGUST 2021

CAD DWG FILE: GSP_P100.dwg

DRAWN BY: MVB

CHECKED BY: MVB

DSS PROJECT NUMBER: P-658-200-002

28 PROJECT NUMBER: 2015.00

DATE: 23 AUGUST 2021

FLOOR PLANS - PLUMBING - DEMOLITION AND NEW WORK

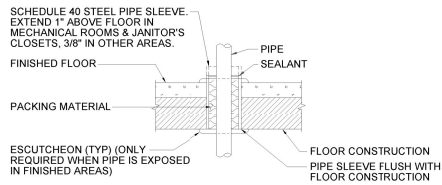
P.100

Page 68 of 79



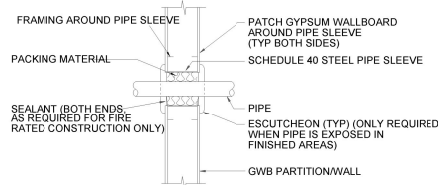
Professional Certification: I hereby certify that these documents were prepared or approved by me, and that I am a duly licensed professional engineer under the laws of the state of Maryland. License No. 20898, Expiration Date: 06/30/2025.

JPA Project No. 7375-20
GREENBRIER STATE PARK CHARGE STATION
STATE OF MARYLAND - DEPARTMENT OF GENERAL SERVICES
21843 NATIONAL PIKE
BOONSBORO, MD 21713



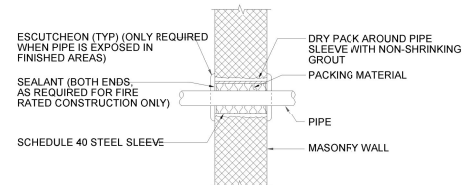
NOTES:
THIS DETAIL APPLIES TO BOTH INSULATED AND NON-INSULATED PIPE.
FOR FIRE RATED CONSTRUCTION PROVIDE APPROPRIATE APPROVED THROUGH-PENETRATION FIRESTOP ASSEMBLY TO MAINTAIN THE FIRE RATING OF THE FLOOR ASSEMBLY.

DETAIL 1
PIPE THROUGH FLOOR
NOT TO SCALE



NOTES:
THIS DETAIL APPLIES TO BOTH INSULATED AND NON-INSULATED PIPE.
FOR FIRE RATED CONSTRUCTION PROVIDE APPROPRIATE APPROVED THROUGH-PENETRATION FIRESTOP ASSEMBLY TO MAINTAIN THE FIRE RATING OF THE WALL ASSEMBLY.

DETAIL 2
PIPE THROUGH INTERIOR METAL/WOOD STUD
GWB PARTITION OR WALL
NOT TO SCALE



NOTES:
THIS DETAIL APPLIES TO BOTH INSULATED AND NON-INSULATED PIPE.
FOR FIRE RATED CONSTRUCTION PROVIDE APPROPRIATE APPROVED THROUGH-PENETRATION FIRESTOP ASSEMBLY TO MAINTAIN THE FIRE RATING OF THE WALL ASSEMBLY.

DETAIL 3
PIPE THROUGH INTERIOR MASONRY WALL
NOT TO SCALE

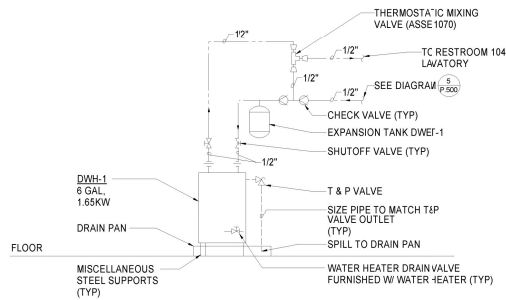


DIAGRAM 4
DOMESTIC HOT WATER HEATER
NOT TO SCALE

HOT WATER SYSTEM DESIGN TEMPERATURE SCHEDULE	
EQUIPMENT	TEMPERATURE
WATER HEATER SET POINT	140°F
THERMOSTATIC MIXING VALVE SET POINT (ASSE 1070)	100°F

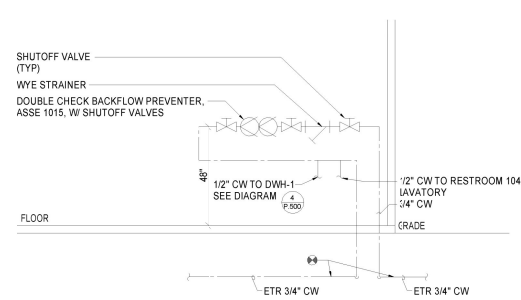


DIAGRAM 5
DOMESTIC WATER SERVICE ENTRANCE
NOT TO SCALE



ZIGER | SNEAD ARCHITECTS

1006 Marlon Street
Baltimore, Maryland 21201
410.576.9131
ziger@snlead.com

STRUCTURAL ENGINEER
Abstract Engineering
2500 Boston Street
Suite 300, MS-12
Baltimore, MD 21224
410-649-9100

LANDSCAPE ARCHITECT
Flora Tealer Landscape Architects
800 N. Charles St
Suite 300
Baltimore, MD 21201
410-649-9100

MECHANICAL ENGINEER
James Prossy Associates
11155 Red Run Blvd.
Suite 310
Baltimore, MD 21117
410-949-9100

GEOTECHNICAL ENGINEER
Schubert Engineering
9900 Jcc Stuart Pkwy
Suite 200
Chesapeake, VA 23059
804-694-9100

CIVIL ENGINEER
AMT Engineering, Inc.
800 King Farm Blvd
2nd Floor
Rockville, MD 20850
301-481-1200

COST ESTIMATOR
Farella Group, LLC
5180 Patuxent Dr.
Suite 700
Cherry Hill, VA 20151
703-669-1200



Professional Certification: I hereby certify that these documents were prepared or approved by me, and that I am a duly licensed professional engineer under the laws of the state of Maryland. License No. 20896. Expiration date: 02/28/2025.

JPA Project No. 7375-20

GREENBRIER STATE PARK
CHARGE STATION

STATE OF MARYLAND - DEPARTMENT OF
GENERAL SERVICES
21845 NATIONAL PIKE
BOONSBORO, MD 21713

NO.	REVISION TITLE	DATE

SDP AND CONSTRUCTION SET 23 AUGUST 2021

CAD DWG FILE: GSP_P.600.dwg

DRAWN BY: MWB

CHECKED BY: MWB

DGS PROJECT NUMBER: P-653-200-002

PROJECT NUMBER: 2015.00

DATE: 23 AUGUST 2021

PLUMBING SCHEDULES

P.600

Page 73 of 79

BACKFLOW PREVENTER ASSEMBLIES

DESIGNATION	STANDARD NUMBER	BACKFLOW PREVENTER OR METHOD	USE	SIZE	PEAK DESIGN FLOW RATE (GPM)	MAXIMUM PRESSURE DROP AT PEAK DESIGN FLOW (PSI)	FLOW RATE AT MAXIMUM PRESSURE DROP (GPM)	PRESSURE DROP AT LOW FLOW (PSI)	MANUFACTURER AND MODEL NUMBER	NOTES
BFP-1	ASSE 1015	DOUBLE CHECK BACKFLOW ASSEMBLY	DOMESTIC SERVICE ENTRANCE	3/4"	12	4	12	2	WATTS 007M3Q1-S	1

NOTES:

1. LEAD FREE NSF61(ANSI) 372.
2. PROVIDE BACKFLOW PREVENTER WITH WYE STRAINER.

WATER HEATER SCHEDULE

DESIGNATION	LOCATION	TYPE OF WATER HEATER	STORAGE CAPACITY (GAL)	INPUT	RECOVERY RATE AT 90 DEG F RISE (GPH)	VOLTS/PHASE	MANUFACTURER AND MODEL NUMBER	NOTES
DWH-1	STORAGE 103A	ELECTRIC TANK	6	1.65 KW	6	120/1	AO SMITH EJC-6	

NOTES:

THERMOSTATIC MIXING VALVES

DESIGNATION	LOCATION	SERVES	PEAK DESIGN FLOW RATE (GPM)	MAX PRESSURE DROP (PSI)	INLET/OUTLET SIZE (IN)	OUTLET TEMPERATURE SETPOINT (DEG)	MANUFACTURER AND MODEL NUMBER	NOTES
TMV-	STORAGE 103A	DWH-1	6	5	0.5/0.5	110	POWERS LFG480	1,2,3

NOTES:

1. LEAD FREE NSF61(ANSI) 372.
2. VALVE RATED FOR MINIMUM FLOW 0.25 GPM WITH CONTINUOUSLY OPERATING RECIRCULATION PUMP AS TESTED IN ACCORDANCE WITH ASSE 1070.
3. VALVE IS EXPOSED IN STORAGE 103A.

PLUMBING FIXTURE ROUGH-IN SCHEDULE

DESIGNATION	TYPE OF FIXTURE	ADA	MOUNTING	FLOW RATES	OPERATION				NOTES		
					MANUAL	SENSOR	CW	ROUGH-IN CONNECTIONS			
F-1	WATER CLOSET	•	FLOOR	1.6 GPF	•	-	1/2"	HW	TV	4"	1
F-2	LAVATORY	•	WALL	0.5 GPM	•	-	1/2"	1/2"	1/2"	1 1/2"	1,2

NOTES:

1. SEE SPECIFICATION SECTION 22 4200 INSTITUTIONAL PLUMBING FIXTURES FOR ADDITIONAL INFORMATION.
2. TEMPERED WATER SUPPLIED THROUGH AN ASSE 1070 THERMOSTATIC MIXING VALVE.

DOMESTIC WATER EXPANSION TANKS

DESIGNATION	LOCATION	ACCEPTANCE VOLUME (GAL)	TOTAL VOLUME (GAL)	TANK CONNECTION SIZE (IN)	MAX WORKING PRESSURE (PSI)	DIMENSIONS	MANUFACTURER AND MODEL NUMBER	NOTES
XWET-1	STORAGE 103A	0.9	2.0	0.75	150	8" DIA X 14" TALL	AMTROL ST-5C	1,2,3

NOTES:

1. LEAD FREE NSF61(ANSI) 372.
2. ASME CODE SECTION VIII, DIVISION 1.
3. FACTORY PRECHARGED TO 55 PSIG.